

CALIBRATION BATH

Black Body Cavity ready

OB-15/2 BB (+ 40 °C ...+ 250 °C)

OB-15/2 BBLT (- 20 °C ...+ 130 °C)

Special calibration baths - metrology performance:

- Perfect solution for calibrating IR thermometers and other thermographic equipment
- Various shapes Black Body Cavities available
 - Uniformity and stability in mK range
 - Fluid ensures perfect heat transfer
 - Unique vertical flow design
 - Two temperature ranges
 - State of the art solution





Over temperature shut off device"

Vertical fixture – one included as standard

Special double cylinder design with unique vertical flow across entire working volume

15L working chamber with immersion depth 270 mm

Touch screen based controller with user friendly interface, history graph advance settings options RS-232, USB or Ethernet communication ports

Black Body Cavity – available in various types

Full 4 side maintenance access

Extensive high performance heat insulation

All exterior in stainless steel AISI 304 SB With rounded corners

Air cooled conventional compressor based refrigeration system (BBLT version)

Mobile standalone unite, with built on swivel wheels with brakes

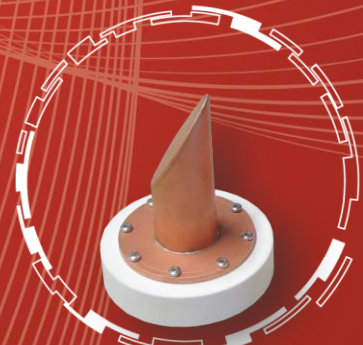
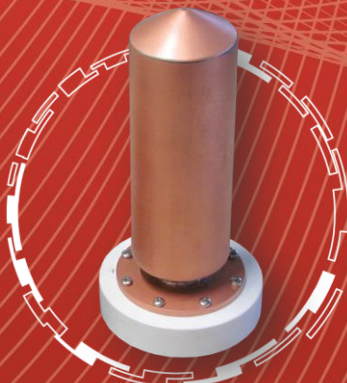
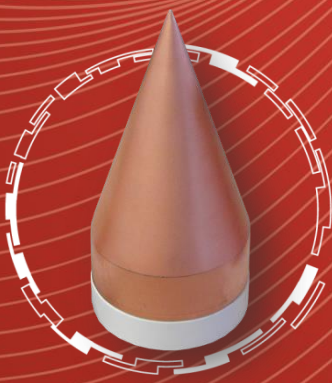
Overflow drain with catch pot and fluid drain valve neatly hidden behind the front cover panel

Black Body Cavity types:

- ASTM Designation E 1965-98

- JIS T 4207:2005

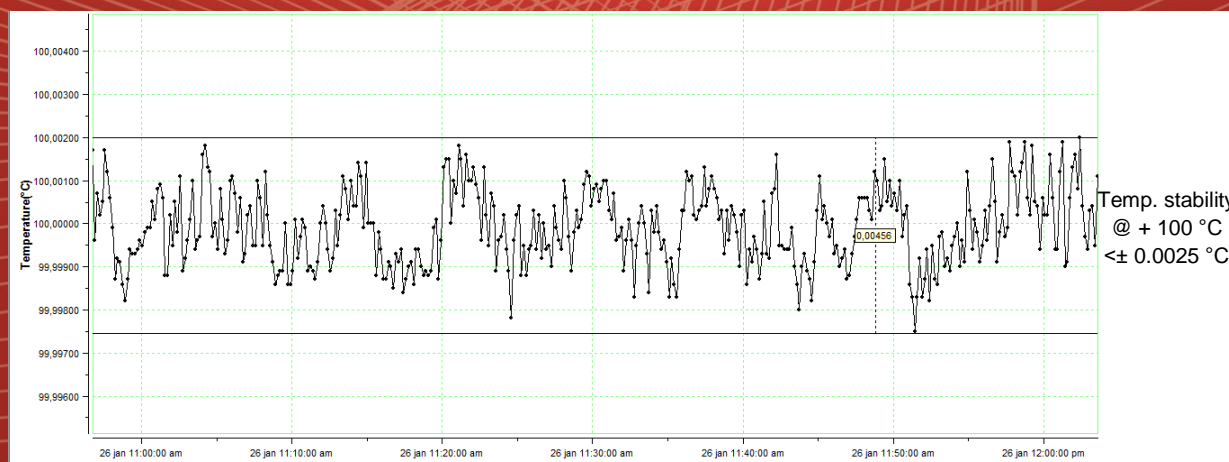
- CEN 2003 EN 12470-5





Controller functions:



Bath's temperature stability graph at + 100 °C:



Technical data:

	OB-15/2 BB	OB-15/2 BBLT
		
External dimensions (WxHxD) in mm	530 x 1090 x 470	530 x 1090 x 470
Internal dimensions (diameter x immersion depth) in mm	Ø 225 x 270	Ø 225 x 270
Volume (L)	~ 15	~ 15
Temperature range (°C)	40 ... + 250	- 20 ... + 130
Temperature display resolution (°C)	0.001	0.001
Temperature set resolution (°C)	0.001	0.001
Temperature stability (°C)	± 0.003 @ 100 °C	± 0.006 @ - 20 °C ± 0.005 @ 0 °C ± 0.003 @ 100 °C
Temperature uniformity (°C)	± 0.007 @ 100 °C	± 0.007 @ -20 °C
Heating rate	~ 42 min (+ 40 °C ...+ 100 °C)	~ 55 min (+ 20 °C ...+ 100 °C)
Cooling rate	N/A (natural cooling)	~ 35 min (+ 20 °C ...- 20 °C)
Temperature Control	PID	PID
Noise level (dBA)	< 48	< 58
Cooling	Natural	Compressor Cooling System
Power supply	230 V 50/60 HZ (± 10 %)	230 V 50/60 HZ (± 10 %)
Wattage (W)	1100	2500
Interface	RS 232 (USB or Ethernet as option)	RS 232 (USB or Ethernet as option)
Weight (kg)	~ 63	~ 88

*All performance in controlled environment (Tambient = 22 °C ± 3 °C)!

*Accessories might affect performance!

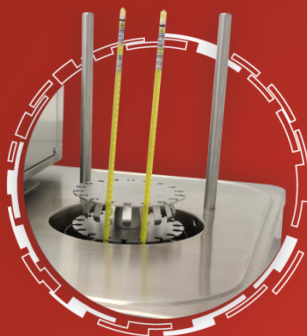
*OB-15/2 BB performance data with fluid KDC 200.50

*OB-15/2 BBLT performance data with fluid KDC 200.05

*All the specifications are related to the bath and the fluid (not to the Black Body Cavity)

Accessories:

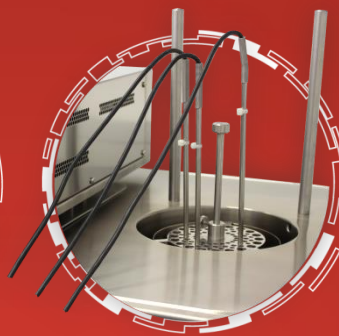
- LIG thermometer holder



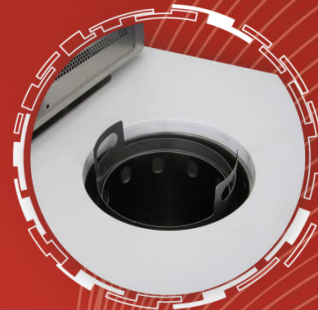
- Vertical fixture



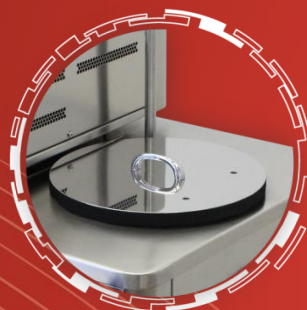
- Adjustable multiple probe fixture



- External fluid level for LIG



- Additional lid



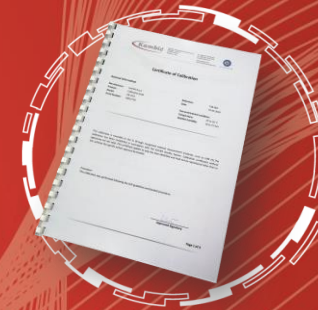
- Foldable shelf



- Fume hood



- Evaluation report



Ordering information and accessories:

Description	Part no.
Calibration bath OB-15/2 BB	1623
Calibration bath OB-15/2 BBLT	1624
Black Body cavity ASTM standard	1654
Black Body cavity JIS T standard	1661
Black Body cavity CEN EN standard	1660
USB interface	1466
Ethernet interface	1716
Evaluation report – performed by Kambic	1719
Evaluation report (accredited ISO/IEC 17025:2017)	1777
OB-Tool (Monitoring and data collection software)	104
External fluid level for LIG	1655
Vertical fixture	1657
Adjustable multiple probe fixture	1733
LIG (liquid in glass thermometer) fixture	1735
Local fume hood with fan	1656
Foldable shelf	1658
Black body mounting flange cover (for operating without black body cavity)	2118
Extra lid for OB-15/2	2116
Extra side insulation lid for OB-15/2	2117
Silicone oil fluid KDC 200.50 (+ 30 °C ...+ 278 °C)	631
Silicone oil fluid KDC 200.05 (- 40 °C ...+ 130 °C)	645

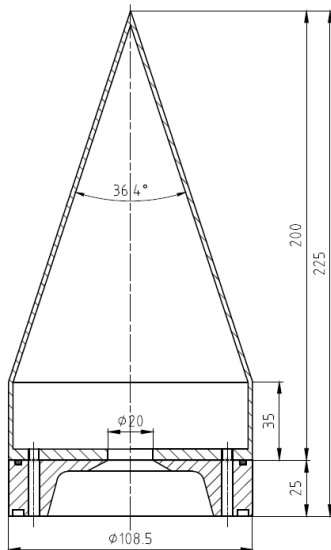
* Black Body Cavity is not included with the base unit. It has to be ordered separately!



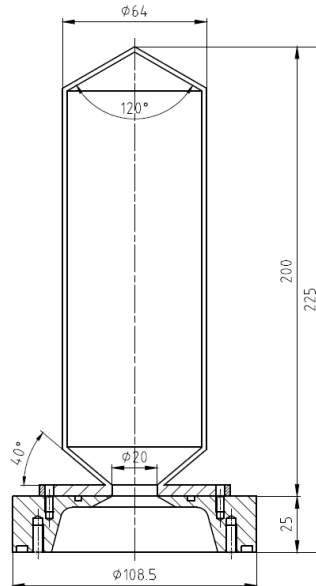
SHIPPING	
W	660 mm
H	1330 mm
D	630 mm
WEIGHT: 73/107 kg * we reserve the right to modifications	

DIMENSIONAL DRAWING	PRODUCT	MODEL
	CALIBRATION BATH With Black Body Cavity	OB-15/2 OB-15/2 BBLT

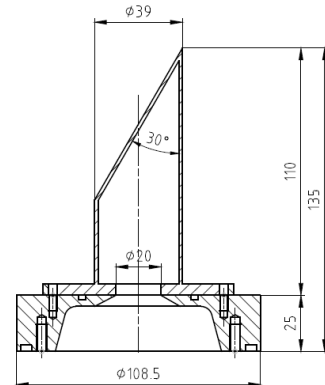
ASTM, Designation E 1965 - 98



JIS T 4207: 2005



CEN 2003 EN 12470-5



Aparat:	Merilo: 1:1,3	Kop: ---	Naziv: BLACK BODY CAVITY
OB-15/2	Material: Copper	Doc: ---	Stavilka risbe: DIMENSIONAL DRAWING
	Trdelnik: ---	Wie in primob: ---	
	Prejedač: ---		