

Quick Connection Device for Electricity Meter Test

- EH10.3 Quick Connection Device**
- Fast and easy mounting and connecting of electricity meters
 - Flexible single and three phase contact pin configurations
 - Possibility to connect of safety cables and current cables up to 120A
 - Spring contact pins with current up to 100A
 - Light weight
 - Smart design



The EH10.3 Quick Connection Device is used together with electricity meter test system, and is especially recommended, when saving time is important. This device enables electricity meters to be mounted and connected rapidly for the purpose of their adjustment, test and verification.



Thanks to the smart design of the EH10.3 quick connection device, it may be used for the connection of practically all types of electricity meters with currents up to 100A. The quick connection device is delivered complete as a ready for operation, and may be easily fixed to the ER10 aluminium suspension rack or multi-position testing stand of TB40 Test Bench, in exactly the same way as a meter is connected.



Spring contact pins of the EH10.3 are used to make connection to the meter and may be easily moved sideways and fixed in any desired position with distance between two adjacent contact pins from 14mm. It is also easy to remove and switch the pin positions for preparing the contact pin configuration to many different meter connection schemes including single and three phase meters.

Spring contact pins enable connecting:



safety voltage and current cables up to 20A with using M8-Ø4 adaptor,

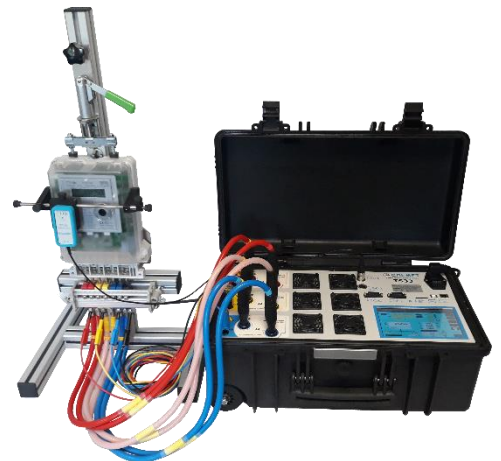


high current cables up to 120A,

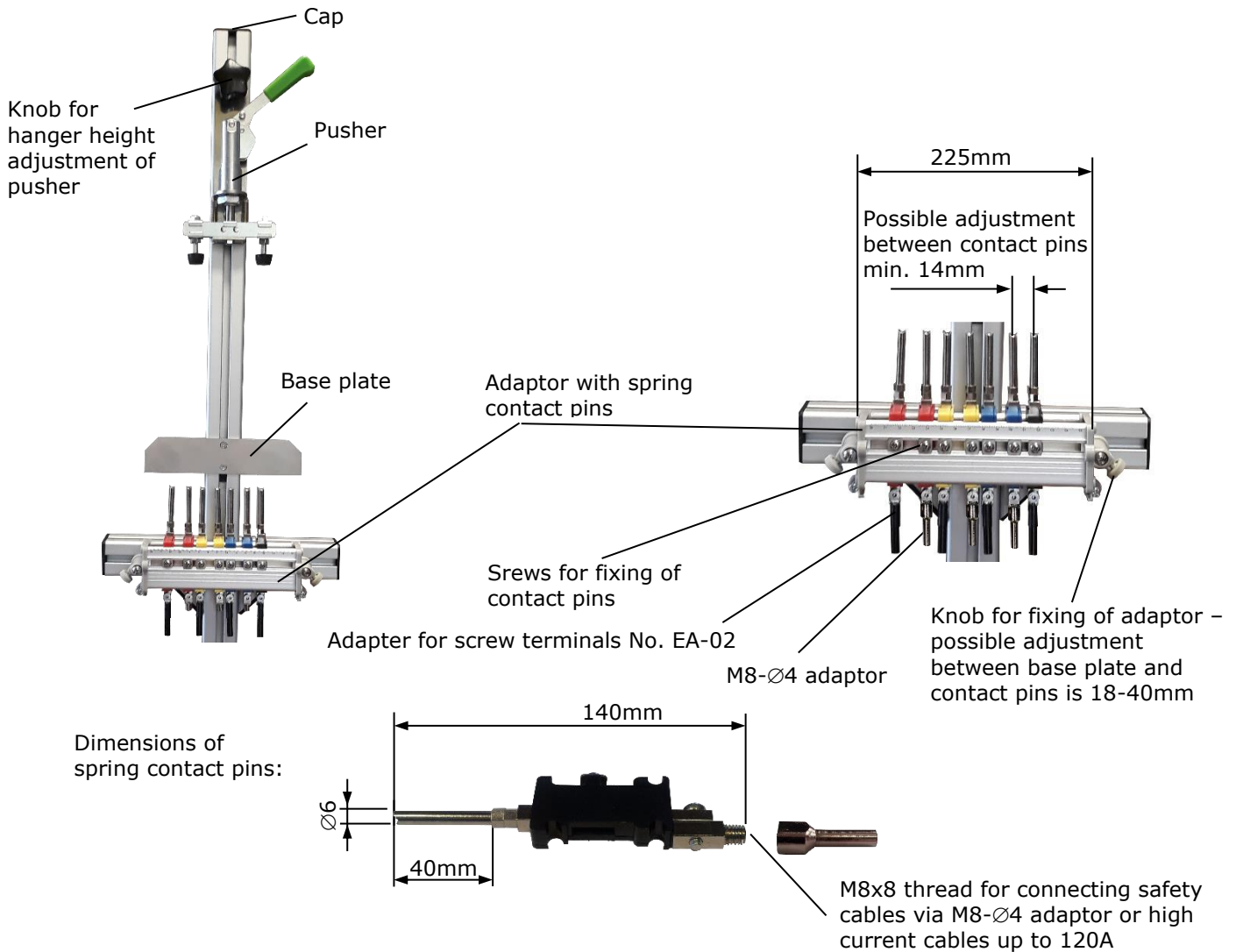


safety voltage cables in order to furnish phase voltages with using adapter for screw terminals.

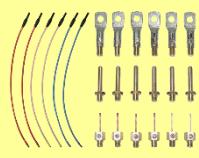
The EH10.3 Quick Connection Device together with ER10 rack and TS33 Test System allows the automatic or manual testing of a single phase and three phase electricity meters in 0.02, 0.05 or 0.1 accuracy class up to 120A current range, without the need of an additional instruments and options - see as example TS33 option set TB1.



The EH10.3 is completely delivered as a ready to use and may be fixed to the ER10 rack as shown in the figures:



Continuous current: 100A
 Maximum current: 120A 10min./1h
 Pin resistance: 0.6mΩ@100A (resistance between M8 thread and terminal of meter including contact resistance)
 Test voltage: 4000VAC / 50Hz / 1min.

EH10.3 Quick Connection Device's equipment	
<p>All completed EH10.3 set consists of:</p> <ul style="list-style-type: none"> • Pusher set • Base plate set, • Adaptor set, • Spring contact pin (7units), • M8-Ø4 adaptor (7units), • Adapter for screw terminals No. EA-02 (4units), • Warranty card. 	<p>Optionally for EH10.3 are available:</p> <ul style="list-style-type: none"> • AKD300 current cables up to 120A (6units) with set (18units) of replaceable terminals,  <ul style="list-style-type: none"> • set of safety voltage and current cables up to 20A (6units),

Calmet sp. z o.o.
 Kukulcza 18, 65-472 Zielona Gora, Poland
 Phone +48 68 324 04 56 Fax +48 68 324 04 57
 E-mail: mail@calmet.com.pl Web access: <http://www.calmet.com.pl>