

**Kambič**

# ULTRA STABLE STANDARD RESISTOR MAINTENANCE BATH

(+ 5 °C ...+ 60 °C)

**OB-60/2 LTUS**

**OB-100/2 LTUS**

**OB-110/2 LTUS**

**Dedicated standard resistor maintenance baths  
with exceptional metrology performance:**

- Uniformity and stability in mK range
- Unique vertical flow design
- Hinged transparent cover
- State of the art solution
- Multiple access ports
- Two bath sizes



## Device description:



Touch screen based controller with user friendly interface, history graph advance settings options RS-232, USB communication ports

Over temperature shut off device

Special double cylinder design with unique vertical flow across entire working volume

50L or 70L or 110L working chamber volume with immersion depth 268 mm.

Hinged transparent cover with multiple access options on fix backwall for wires

Full 4 side maintenance access

Extensive high performance heat insulation

Overflow drain with catch pot and fluid drain valve neatly hidden behind the front cover panel

Air cooled conventional compressor based refrigeration system

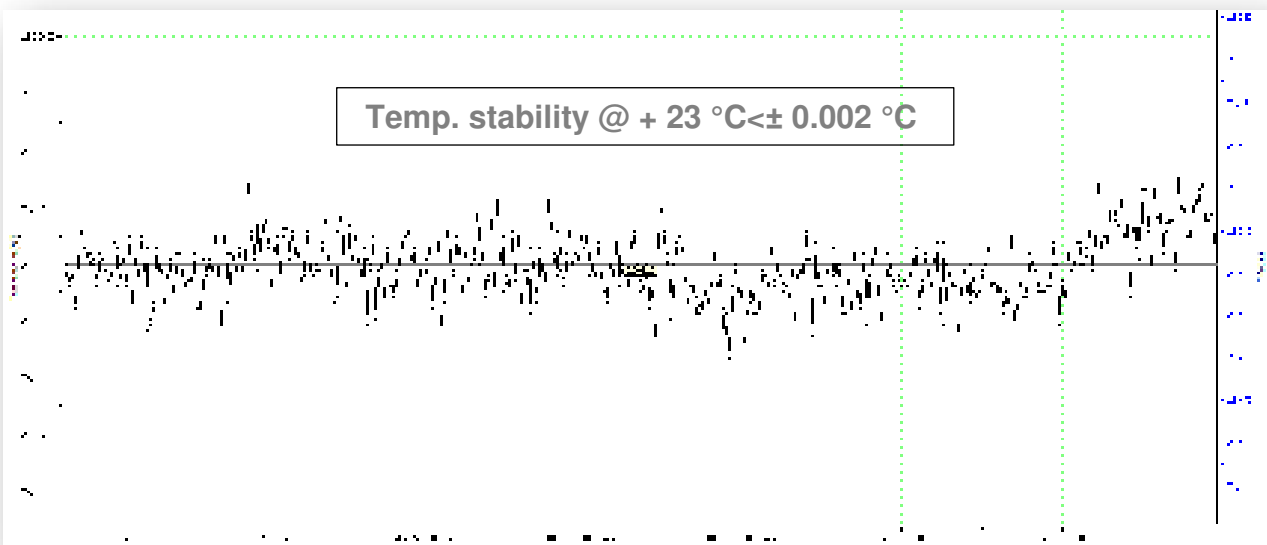
Al exterior and interior in stainless steel AISI 304 SB With rounded corners

Mobile standalone unite with built on swivel wheels with brakes




**Controller functions:**



**Bath's temperature stability graph at + 23 °C:**



## Technical data:

	OB-60/2 LTUS	OB-100/2 LTUS	OB-110/2 LTUS
			
External dimensions (WxHxD) in mm	1000 x 1035 x 550	1100 x 1035 x 650	1100 x 1120 x 750
Internal dimensions (WxHxD) in mm	550 x 320 x 268	640 x 400 x 268	640 x 350 x 500
Working volume (L)	~ 47	~ 68	~ 112
Fluid quantity for operation (L)	~ 78	~ 115	~ 155
Temperature range (°C)	+ 5 ...+ 60	+ 5 ...+ 60	+ 5 ...+ 60
Temperature display resolution (°C)	0.001	0.001	0.001
Temperature set resolution (°C)	0.001	0.001	0.001
Temperature stability (°C)	± 0.003 @ 23 °C	± 0.003 @ 23 °C	± 0.003 @ 23 °C
Temperature uniformity (°C)	< ± 0.007@ 23 °C	< ± 0.007@ 23 °C	< ± 0.007@ 23 °C
Cool down rate	~ 260 min (+ 20 °C ...+ 5 °C)	~ 320 min (+ 20 °C ...+ 5 °C)	~ 450 min (+ 20 °C ...+ 5 °C)
Heat up rate	~ 120 min (+ 20 °C ...+ 60 °C)	~ 150 min (+ 20 °C ...+ 60 °C)	~ 245 min (+ 20 °C ...+ 60 °C)
Temperature Control	PID	PID	PID
Noise level (dBA)	< 58	< 58	< 58
Cooling	Compressor Cooling System	Compressor Cooling System	Compressor Cooling System
Power supply	230 V 50/60 HZ (± 10 %)	230 V 50/60 HZ (± 10 %)	230 V 50/60 HZ (± 10 %)
Wattage (W)	3200	3200	3200
Interface	RS 232 (USB as option)	RS 232 (USB as option)	RS 232 (USB as option)
Weight (kg)	~ 110	~ 125	~ 155

\*All performance data with fluid KDC 200.05

\*All performance in controlled environment ( $T_{\text{ambient}} = 22 \text{ °C} \pm 3 \text{ °C}$ )!

\*Accessories might affect performance!

## Ordering information and accessories:

Description	Part no.
Ultra stable standard resistor maintenance bath OB-60/2 LTUS	1644
Ultra stable standard resistor maintenance bath OB-100/2 LTUS	1643
Ultra stable standard resistor maintenance bath OB-110/2 LTUS	2944
USB interface	1466
Evaluation report – performed by Kambič	1719
Evaluation report (accredited ISO/IEC 17025:2017)	2997
OB-Tool (Monitoring and data collection software)	104
Silicone oil fluid KDC 200.05 (- 40 °C ...+ 130 °C)	645



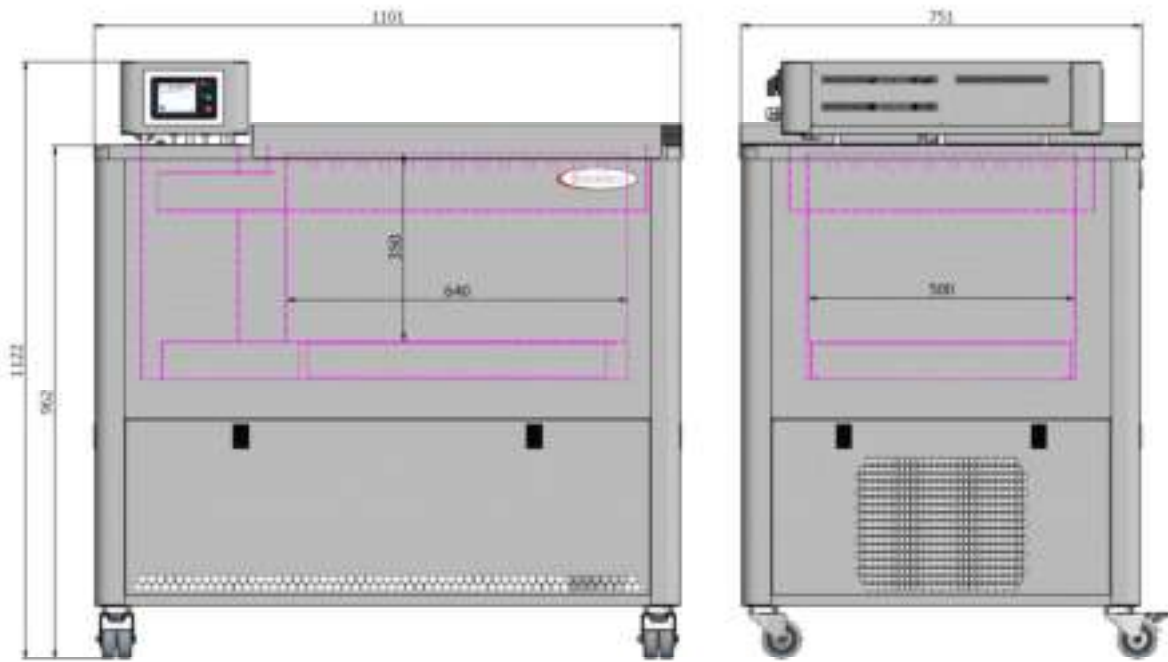
**SHIPPING**  
 W 1150 mm  
 H 1200 mm  
 D 290 mm  
 Net wt 133 kg

DIMENSIONAL DRAWING	PRODUCT	MODEL
	ULTRA STABLE RESISTOR MAINTENANCE BATH	09-60/2 LT16



**SHIPPING**  
 W 1250 mm  
 H 1200 mm  
 D 300 mm  
 Net wt 135 kg

DIMENSIONAL DRAWING	PRODUCT	MODEL
	ULTRA STABLE RESISTOR MAINTENANCE BATH	09-100/2 LT16



SHIPPING
W 1240 mm
H 1250 mm
D 960 mm
WT 210 kg

[www.kambi.com](http://www.kambi.com)

DIMENSIONAL DRAWING	PRODUCT	MODEL
	CALIBRATION BATH	CB-1102 LT US