

# AIR BATH

TK-8 US

TK-50 US

TK-105 US

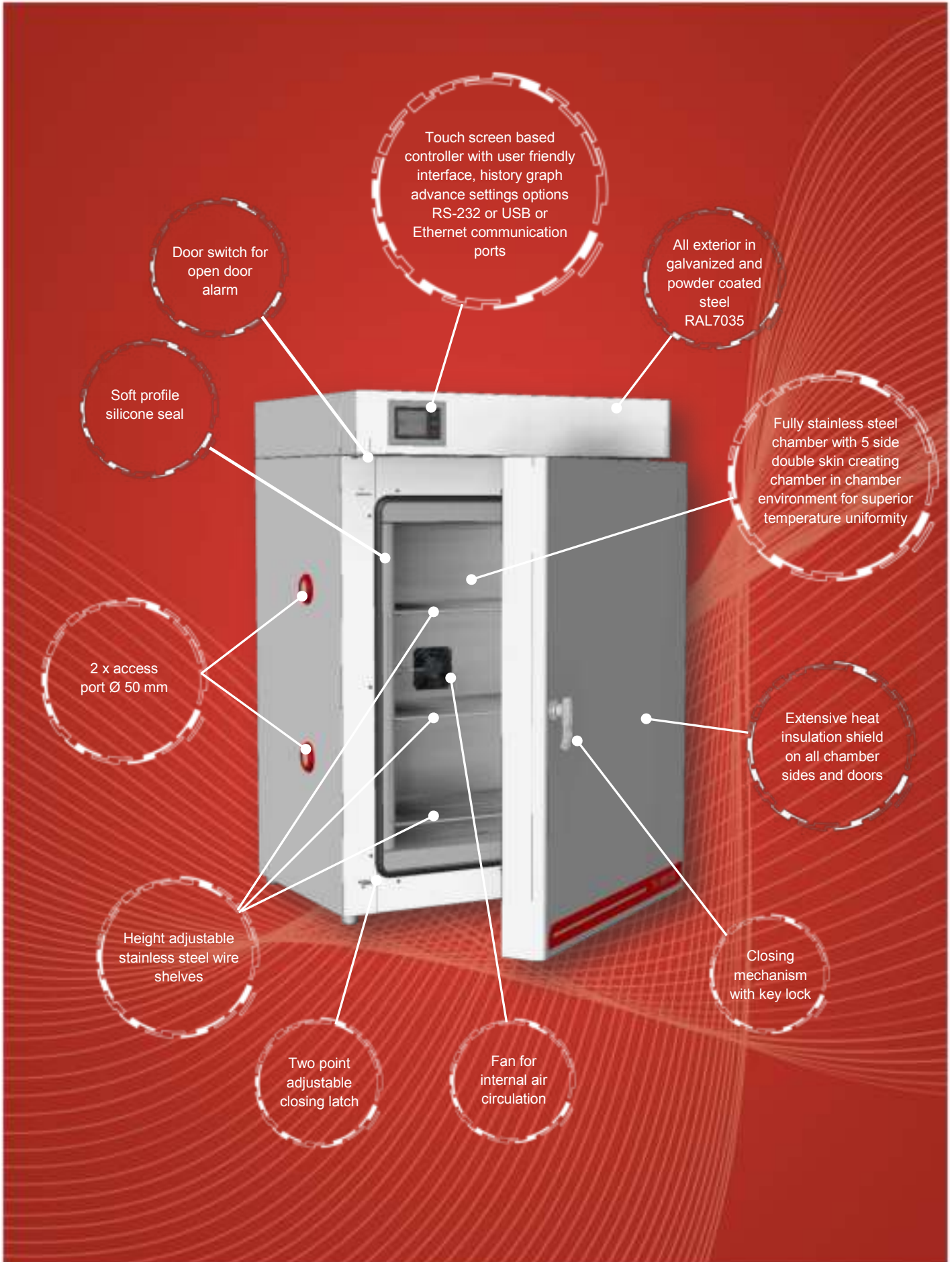
TK-190 US

TK-300 US

Refined solution for ultra-stable temperature environment 24/7, 365:

- Convenient Front Access – Side Access for Cables & Probes
- Dry, clean, stable, silent, storage for standard resistors
  - Keeping the temperature within 10mK over months
    - Perfect for checking temperature coefficients
  - Peltier driven technology
  - Cascade PID control





Touch screen based controller with user friendly interface, history graph advance settings options RS-232 or USB or Ethernet communication ports

All exterior in galvanized and powder coated steel RAL7035

Fully stainless steel chamber with 5 side double skin creating chamber in chamber environment for superior temperature uniformity

Extensive heat insulation shield on all chamber sides and doors

Closing mechanism with key lock

Fan for internal air circulation

Two point adjustable closing latch

Height adjustable stainless steel wire shelves

2 x access port Ø 50 mm

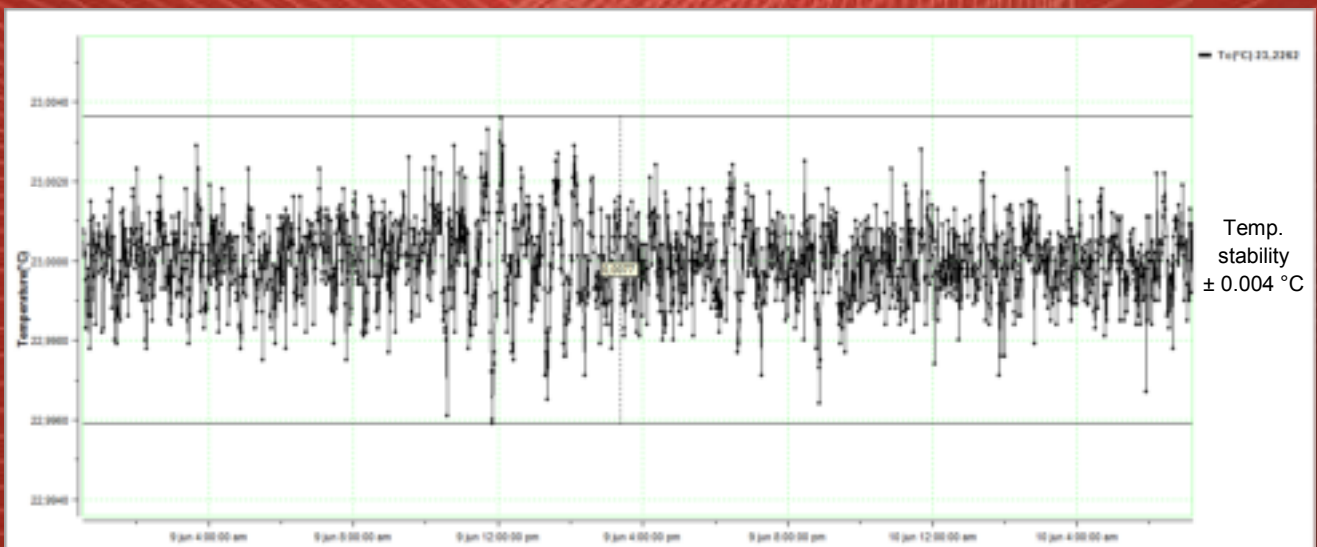
Soft profile silicone seal

Door switch for open door alarm



**Controller functions:**



**Chamber temperature stability graph at + 23 °C:**





### Technical data:

	TK-8 US	TK-50 US
		
External dimensions (WxHxD) in mm	230 x 578 x 332	705 x 865 x 640
Internal dimensions (WxHxD) in mm	160 x 330 x 157	400 x 375 x 350
Volume (L)	~ 8	~ 53
Temperature range (°C)	+ 15 ...+ 50	+ 15 ...+ 50
Temperature display resolution (°C)	0.001	0.001
Temperature set resolution (°C)	0.01	0.01
Temperature stability (°C)	± 0.005 @ 23 °C	± 0.005 @ 23 °C
Temperature uniformity (°C)	± 0.01 @ 23 °C ± 0.05 @ 15 °C ± 0.10 @ 35 °C	± 0.01 @ 23 °C ± 0.05 @ 15 °C ± 0.10 @ 35 °C
Heating rate	~ 80 min (+ 15 °C ...+ 50 °C)	~ 80 min (+ 15 °C ...+ 50 °C)
Cooling rate	~ 80 min (+ 50 °C ...+ 15 °C)	~ 80 min (+ 50 °C ...+ 15 °C)
Temperature Control	Cascade PID	Cascade PID
Power supply	230 V 50/60 HZ (± 10 %)	230 V 50/60 HZ (± 10 %)
Wattage (W)	200	200
Interface	RS 232 (USB or Ethernet as option)	RS 232 (USB or Ethernet as option)
Shelve	2	2
Access port	1 x Ø 40 mm 1 x Ø 50 mm	2 x Ø 50 mm
Weight (kg)	~ 25	~ 79


\*All performance in controlled environment (Tambient = 22 °C ± 3 °C)!

\*Accessories might affect performance!

	TK-105 US	TK-190 US
		
External dimensions (WxHxD) in mm	705 x 1130 x 700	875 x 1300 x 700
Internal dimensions (WxHxD) in mm	400 x 640 x 410	570 x 810 x 410
Volume (L)	~ 105	~ 190
Temperature range (°C)	+ 15 ... + 50	+ 15 ... + 50
Temperature display resolution (°C)	0.001	0.001
Temperature set resolution (°C)	0.01	0.01
Temperature stability (°C)	± 0.005 @ 23 °C	± 0.005 @ 23 °C
Temperature uniformity (°C)	± 0.01 @ 23 °C ± 0.05 @ 15 °C ± 0.10 @ 35 °C	± 0.02 @ 23 °C ± 0.08 @ 15 °C ± 0.20 @ 35 °C
Heating rate	~ 110 min (+ 15 °C ... + 50 °C)	~ 145 min (+ 15 °C ... + 50 °C)
Cooling rate	~ 110 min (+ 50 °C ... + 15 °C)	~ 160 min (+ 50 °C ... + 15 °C)
Temperature Control	Cascade PID	Cascade PID
Power supply	230 V 50/60 HZ (± 10 %)	230 V 50/60 HZ (± 10 %)
Wattage (W)	250	250
Interface	RS 232 (USB or Ethernet as option)	RS 232 (USB or Ethernet as option)
Shelve	2	2
Access port	2 x Ø 50 mm	2 x Ø 50 mm
Weight (kg)	~ 112	~ 150

\*All performance in controlled environment (Tambient = 22 °C ± 3 °C)!

\*Accessories might affect performance!

	<b>TK-300 US</b>
	
External dimensions (WxHxD) in mm	905 x 1490 x 800
Internal dimensions (WxHxD) in mm	601 x 1000 x 500
Volume (L)	~ 300
Temperature range (°C)	+ 18 ... + 35 °C
Temperature display resolution (°C)	0.001°C
Temperature set resolution (°C)	0.01
Temperature stability (°C)	± 0.005 @ 23 °C
Temperature uniformity (°C)	± 0.04 @ 23 °C ± 0.10 @ 18 °C ± 0.25 @ 35 °C
Heating rate	~ 120 min (+ 18 °C ... + 35 °C)
Cooling rate	~ 120 min (+ 35 °C ... + 18 °C)
Temperature Control	Cascade PID
Power supply	230 V 50/60 HZ (± 10 %)
Wattage (W)	250
Interface	RS 232 (USB or Ethernet as option)
Shelve	2
Access port	2 x Ø 50 mm
Weight (kg)	~ 210

\*All performance in controlled environment (Tambient = 22 °C ± 3 °C)!

\*Accessories might affect performance!

### Ordering information and accessories:

Description	Part no.
Air bath TK-8 US	2831
Air bath TK-50 US	1778
Air bath TK-105 US	1721
Air bath TK-190 US	1722
Air bath TK-300 US	2640
USB interface	1466
Ethernet interface	1716
Shelve TK-8 US	2832
Shelve TK-50 US	1779
Shelve TK-105 US	1725
Shelve TK-190 US	1727
Shelve TK-300 US	1780
Access Port w. Plug Ø 50 mm	608
Password protection	1718
Evaluation report	1719
Evaluation report (Accredited ISO/IEC 17025:2017)	1777
TK-Tool (Monitoring and data collection software)	104
Transportation case for TK-8 US	2833
Trolley for TK-50 US	1781
Trolley for TK-105 US	2611
Trolley for TK-190 US	2612
Trolley for TK-300 US	1782

